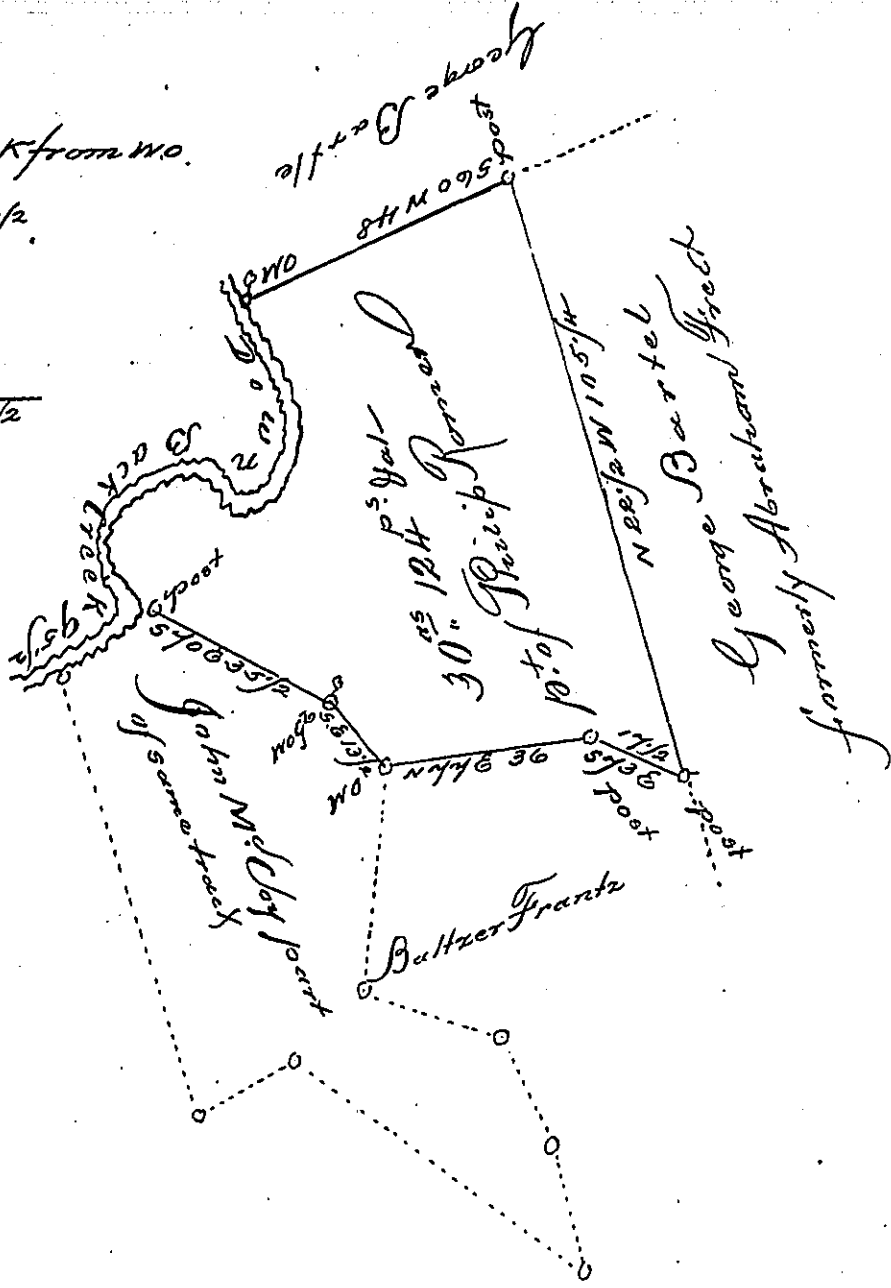


Down Creek from no.

5 29 & 22 1/2
 5 0 W 18
 5 54 W 8
 N 52 W 14
 5 60 W 12
 5 2 1/2 & 18

 95 1/2



Draught of a Tract of Land situated late in Hamilton, now St. Thomas
 Township Franklin County, containing thirty acres, one hundred and
 twenty four perches and allowance of six per cent for Roads &c. being part
 of a larger tract of 54 acres 59 perches. Surveyed 13th December 1816.
 In pursuance of a warrant granted to Philip Romer dated 25th
 of May 1790. The above part was surveyed and divided off 16th Sep-
 tember, 1828, by the undersigned, under the direction of William
 Hamilton late Deputy Surveyor. Certified 13th May 1830.

Wm. D. David, Jr.

To Jacob Spangler Esq.
 Surveyor General

IN TESTIMONY that the above is a copy of the original remaining on file in
 the Department of Internal Affairs of Pennsylvania, made
 conformably to an Act of Assembly approved the 16th day of
 February, 1833, I have hereunto set my Hand and caused
 the Seal of said Department to be affixed at Harrisburg,
 this twelfth day of April, 1907

Isaac D. Parsons
 Secretary of Internal Affairs.